



# NOTES

February 2002



## President's Corner

It's hard to believe that Spring is just around the corner! Congratulations to all of you who joined us in January. I hope you are feeling welcome and I look forward to getting to know you all better. The first season in the group can sometimes be overwhelming. Announcements are made in a hurry and sometimes details might not be provided or might not be clear. If this happens, please don't hesitate to ask questions.

It will soon be time to elect officers for the 2002-2003 performance year. I plan to announce next week the nominating committee that will be responsible for putting together a slate of candidates. Information will be provided about what these offices are and the responsibilities of each. Anyone who joined the group in September 2001 or earlier is eligible to run for office so please consider running.

We continue to have the Sees candy for sale. Please do your part. If you have not taken ANY candy to sell, I am asking that each Singer purchase a MINIMUM of one box (24 bars — \$24.00). See Dei Potter to pick up your candy bars — and also be sure to get your Easter candy order in to her right away.

Our rehearsals have been very productive and the music is coming along well. Keep up the good work. Be sure to look at the music during the week so it doesn't surprise you on Tuesday nights. Attend sectional rehearsals when you can and ask the music captains (Sandy Carson for sopranos; Linda Hemphill for altos; and Les Cameron, for tenors & basses) for help if you are having difficulty with anything in particular. Our choreographer, Geri Geis, will be joining us beginning in March to teach moves to some of our numbers. As always, she's sure to have some fun and interesting things in store for us. I know it's going to be another GREAT show!!

—Sandy



## New Members

### Sopranos

Romica Gantt  
Sara Glazer  
Jo Hunsberger  
Victoria Jaggard  
Angeli Martin  
Jen Reitz  
Kathy Schmitz  
Joanne Shore  
Rosemary Stafanka  
Michelle Vignoli

### Altos

Angeli J. Martin  
Silvia Niccolai

### Tenor/Baritone/Bass

Kai Groennings  
Charlie Griggs  
Bert Le Roux

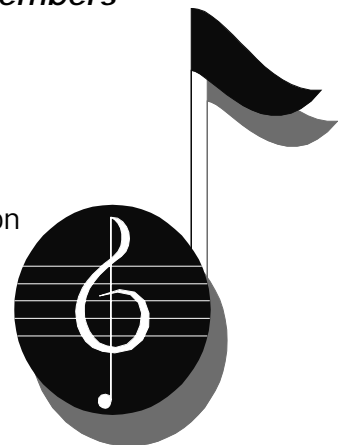
## Returning Members

### Tenor

Bruce Angier

### Baritone

Brian Washington



## DUES

Membership Dues of \$85 should be paid to Katherine Zimmerman, Membership Vice President, **by March 12**. Or see Katherine to discuss a payment plan.